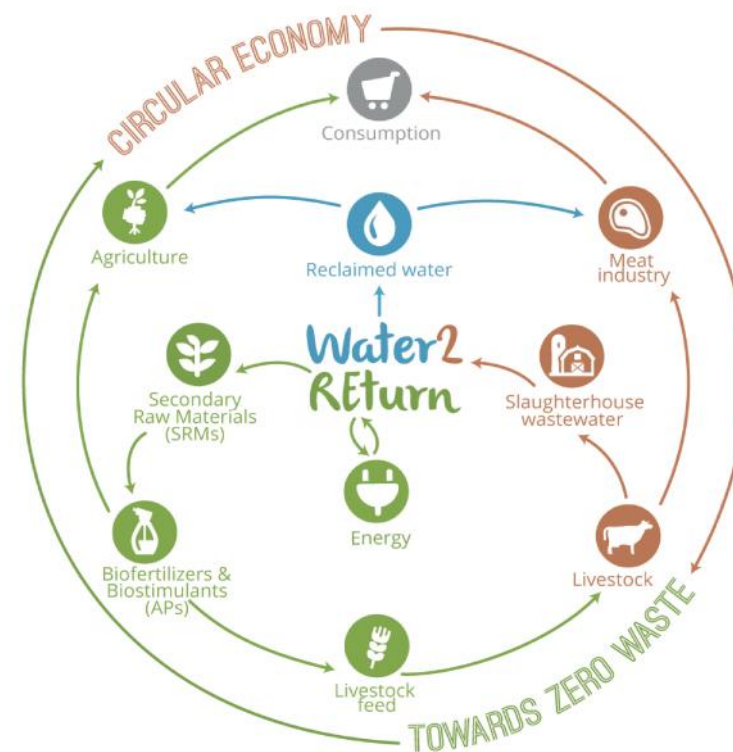
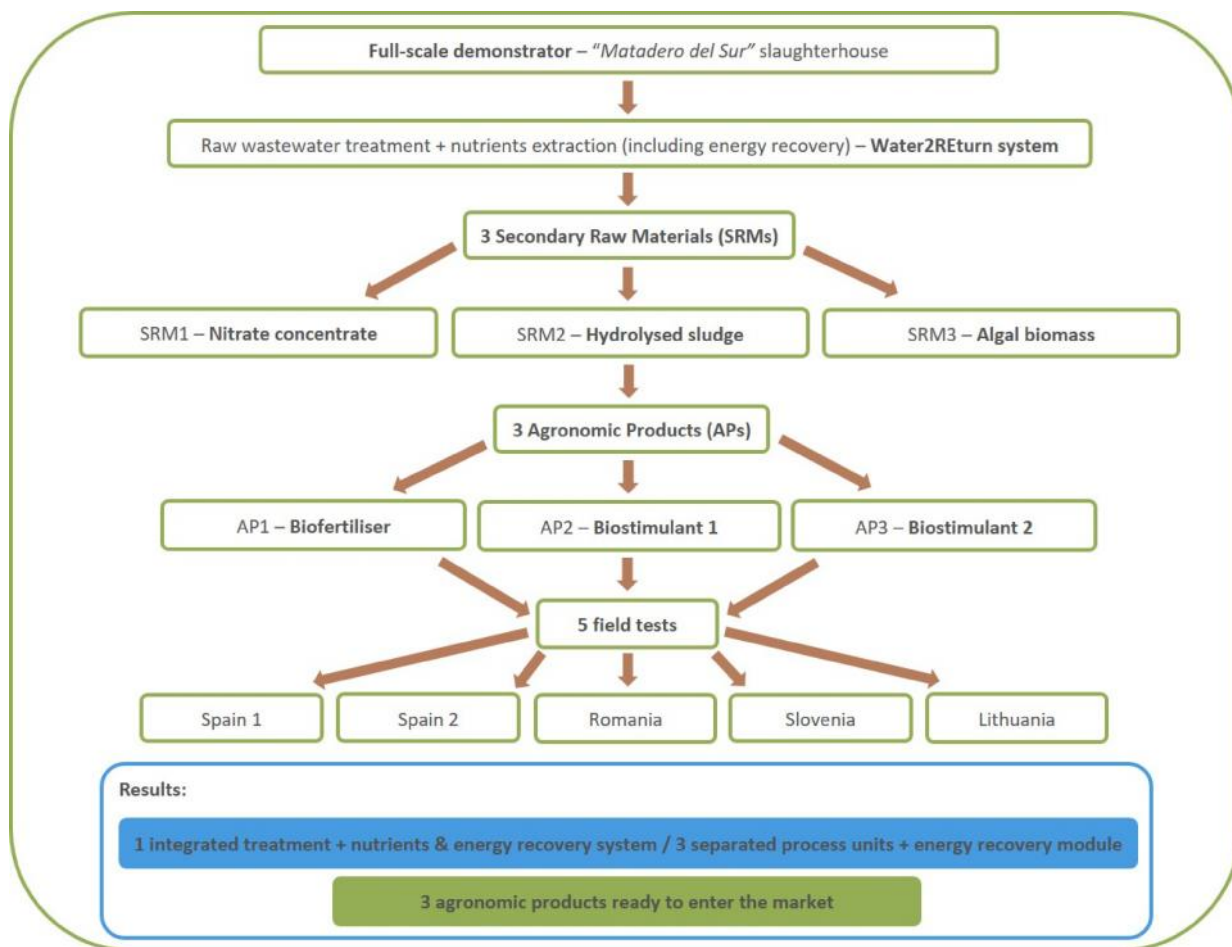
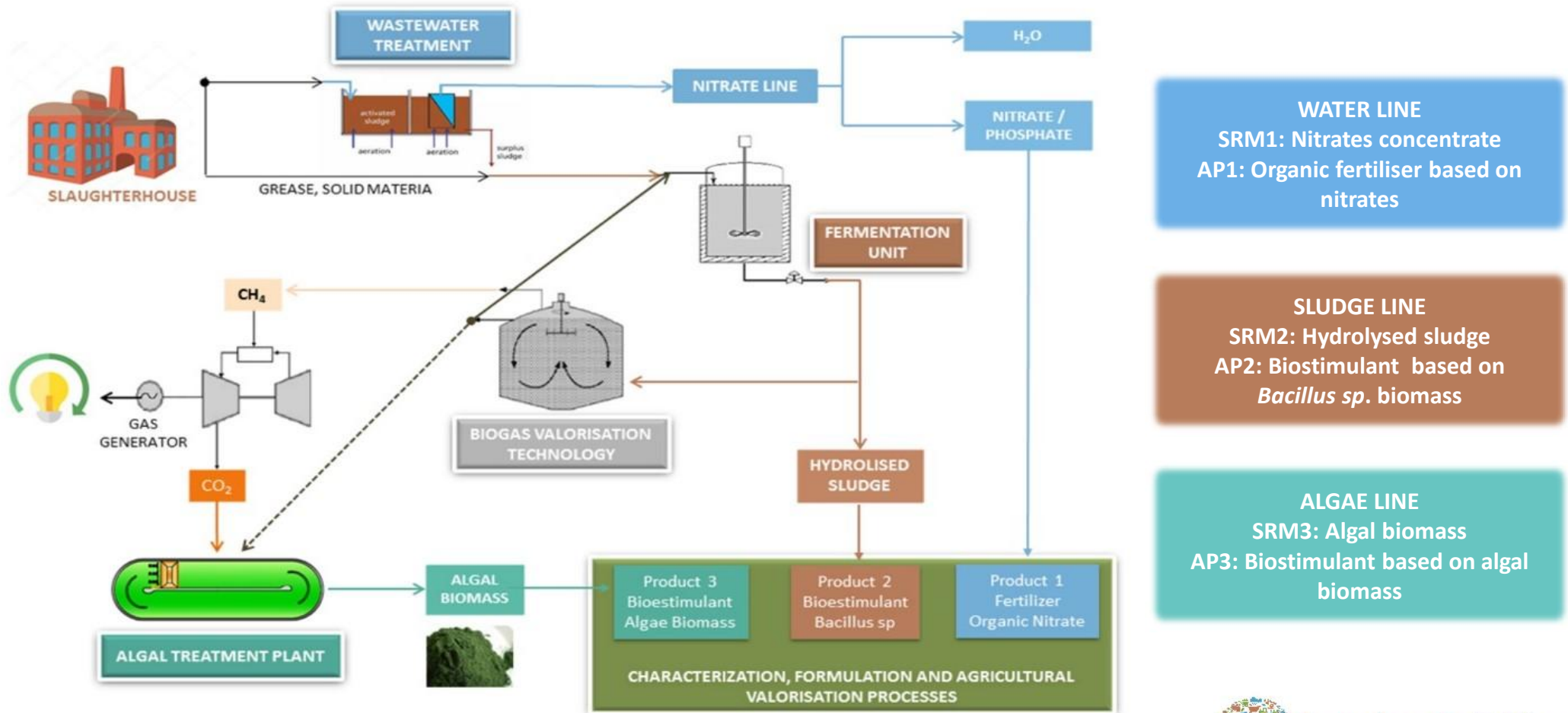


# Water2REturn in a nutshell



Water2REturn proposes an integrated solution for slaughterhouse wastewater treatment, as well as for the recovery of nutrients with high market value in the agricultural sector. This Circular Economy approach turns wastewater treatment facilities into "bio-refineries".

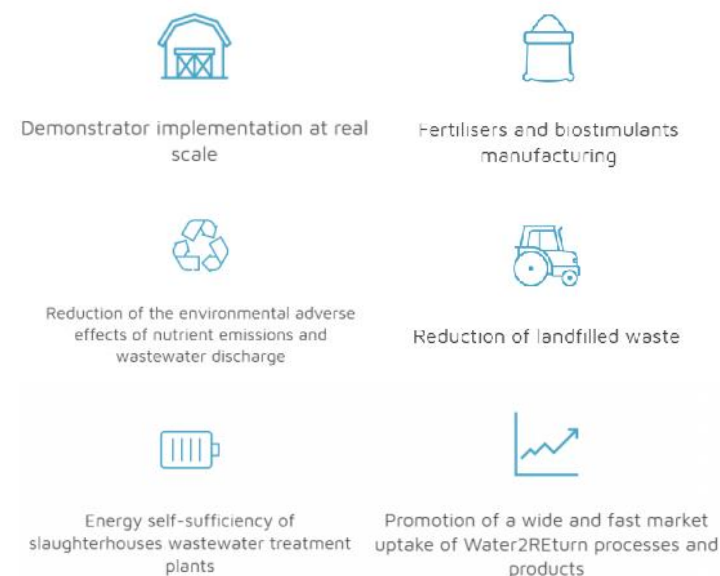
# Water2REturn system



# What will be done? Which the objectives are? When it will be achieved?

- ❑ **1 integrated treatment + nutrients & energy recovery system / 3 separated process units** (water line, sludge line, algae line) + **energy recovery module**.
  - **Demonstrator treatment capacity: 50 m<sup>3</sup> wastewater / day.**
  - **Demo site: “Matadero del Sur”** slaughterhouse near Seville, Spain (wastewater daily flow: 150 m<sup>3</sup>).
- ❑ **Product valorisation for agronomic use** – formulation and optimisation of the 3 APs, field tests for agronomic efficiency, APs manufacturing.
- ❑ **Environmental, economic, social and risk assessments.**
- ❑ **End users need and market uptake at EU level** – stakeholders engagement and consultation, market potential, recommendations to EU and national regulators, business plan implementation.
- ❑ **Communication, dissemination and exploitation.**

## Water2REturn objectives

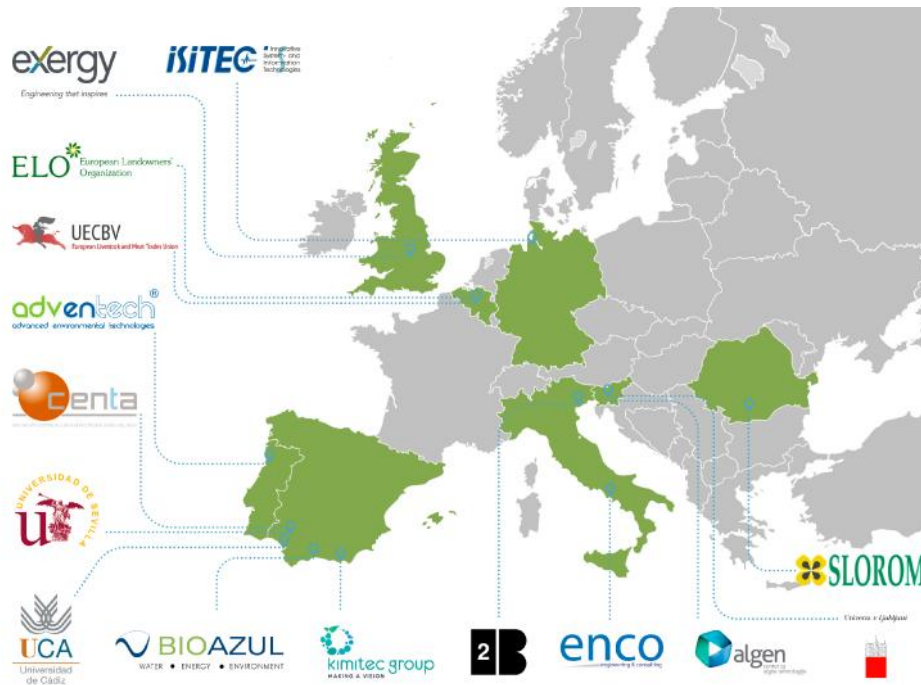


## Water2REturn timing

- ❑ Duration: **01/07/2017 – 31/12/2020.**
- ❑ Demonstrator installation and start-up: **from autumn 2018.**

# Who makes Water2REturn possible? Whom is Water2REturn for?

## Water2REturn consortium



Project Coordinator: **Pilar Zapata Aranda**, BIOAZUL S.L. (Malaga, Spain)

tel: +34 951 047 290 · [pzapata@bioazul.com](mailto:pzapata@bioazul.com) · [www.bioazul.com](http://www.bioazul.com)

Initial target customers:

- Slaughterhouses industry → *early adopters.*
- Meat processing industry.
- Bioagronomic products' distributors.
- Agricultural sector → conventional and organic farmers.



@Water2REturn #Water2REturn

[www.water2return.eu](http://www.water2return.eu)

